

We are working very hard to prepare for transportation during the 20-21 school year. Please know that we are putting the following standard practices in place to ensure the health and safety of all involved:

ROUTING PRACTICES: Routing is being adjusted to reflect only students who ride the bus.

1. Campbell County Schools is operating on a hybrid schedule. Students are assigned an "A" day (Monday, Tuesday) or "B" day (Thursday, Friday) session for face-to-face instruction.
2. **Only CCS Kindergarten is in session on Wednesdays.** Parochial transportation will be limited on Wednesdays to only roads we travel on that day for St. Joseph, St. Peter & Paul and St. Philip. Student pick-up/drop-off for these parochial schools must be along an established bus route to receive bus service. No Wednesday transportation is provided for St. Mary and Bishop Brossart due to busing schedule.
3. **ROUTING AND TIMING ADJUSTMENTS ARE BEING MADE. OUR TRADITIONAL E-LINK METHOD OF REVIEWING BUS TIMES WILL NOT BE ACCURATE AND DRIVERS WILL CONTACT PARENTS/GUARDIANS WITH APPROXIMATE TIMES BEFORE THE START OF SCHOOL FOR STUDENTS THEY TRANSPORT. THEY WILL ALSO REPORT ANY CHANGES IN BUS NUMBER.**
4. CCHS and CCMS buses are not utilizing shuttles (more details below) and will be traveling to both the middle and high school.
5. Buses shall be disinfected/sanitized between routes.
6. For reasons listed above, buses may be delayed the first few days as we work through this process. Please be patient as we make every attempt to ensure the safety of our staff and students.
7. Bus chart/wave assignments soon available on our district website (www.campbellcountyschools.org) under transportation.

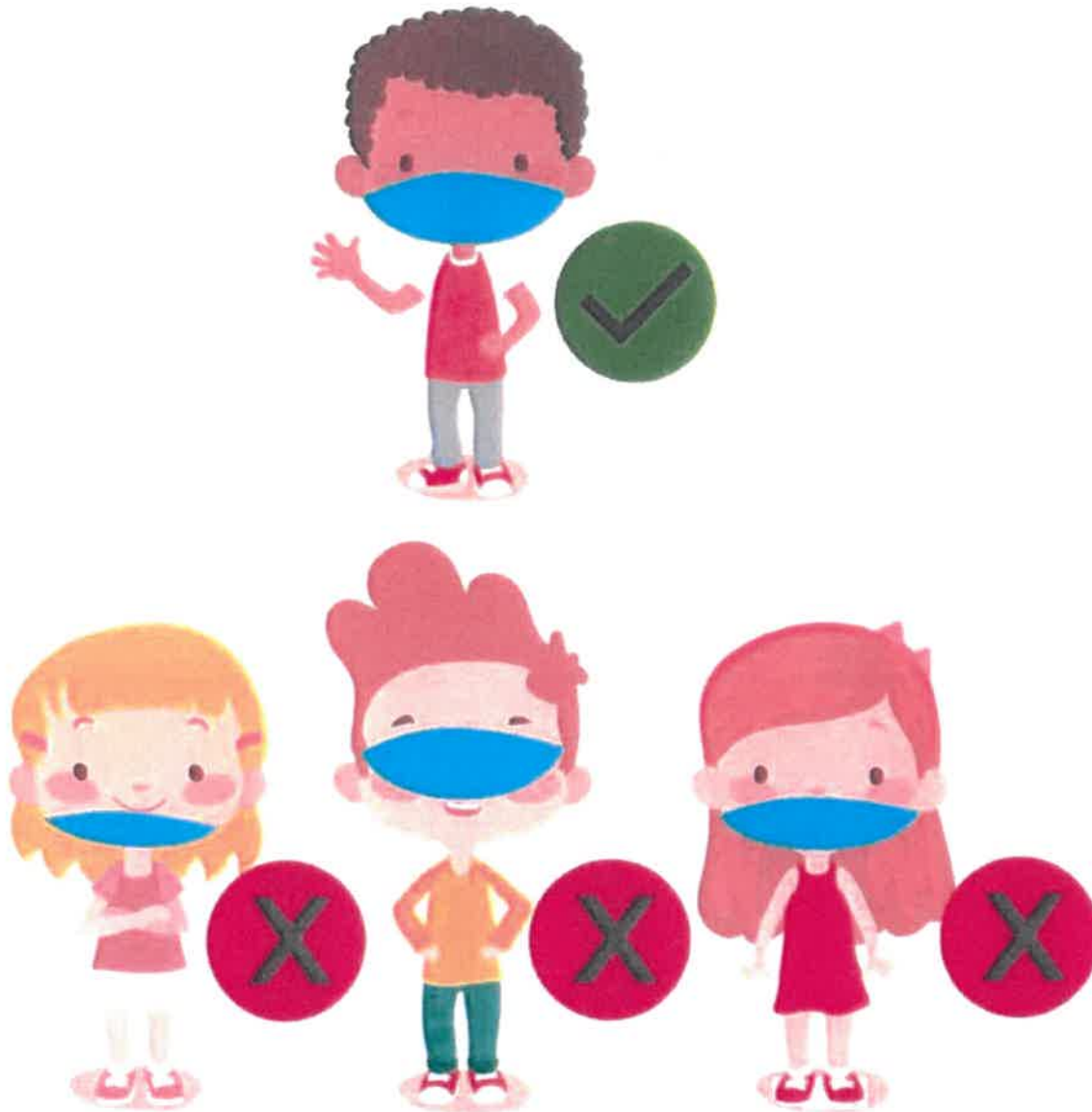
OPERATING PRACTICES: We are requesting your assistance and support by discussing and reinforcing with your children the following procedures:

1. Parents/Guardians are encouraged to take their student's temperatures before they go to the bus stop. Children exhibiting a fever, or other health concerns, should be kept at home.
2. Maintain social distancing to the extent possible at each bus stop.
3. Employees will also conduct a health self-assessment prior to reporting to work. Please note that if we experience many employee absences on a given day, it may have an impact on busing for your child.
4. Student temperatures will be taken when loading the bus or at the school prior to entering the school. These are being conducted with an infrared, contactless (forehead scan) thermometer which conducts a one second temperature measurement. Any temperature above 100.4 will be referred to the school nurse and parents/guardians will be contacted.
5. All students in grades K-12 shall wear a mask unless there is a documented health condition (provided to the school nurse) that prevents them from wearing one. Please review the document on how the mask is to be worn appropriately (attached).
6. Hand sanitizer will be available on the bus. Students will utilize hand sanitizer when loading the bus.
7. ALL STUDENTS will have an assigned bus seat.
8. NO BUS PASSES WILL BE ACCEPTED. STUDENTS MUST BE ON THE BUS ROSTER IN ORDER TO RECEIVE TRANSPORTATION.
9. To the extent possible, students will load the bus in the mornings from back to front (exception for kindergarten and preschool) and unload from front to back. Please reinforce to your children to stay seated when unloading until the driver or monitor indicates they can unload.
10. We will be increasing the circulation of outdoor air as much as possible, such as opening windows and roof hatches to the degree recommended by the Kentucky Department for Public Health.

SHUTTLE PRACTICES:

1. Shuttles where students are mixed together will not be utilized during this re-opening period. Buses will travel to both schools for middle and high school to unload their respective students.
2. Parochial students at St. Mary and Bishop Brossart will have a stand-alone assigned bus that will transport them from CCMS, CCHS to their respective schools in the AM. They will also have an assigned stand-alone bus that will transport them from their school to CCMS, CCHS in the PM. St. Joes students that have historically utilized a transfer bus will still have an individually assigned bus in the AM from Crossroads to St. Joes and PM from St. Joes to Crossroads.

At-A Glance | Cloth Face Coverings, Personal Protective Equipment and School Health Policies



Wearing Your Mask:

- Must cover your mouth and nose
- Is not a toy
- Should be worn any time you are moving around
- Should be worn by everyone kindergarten and above